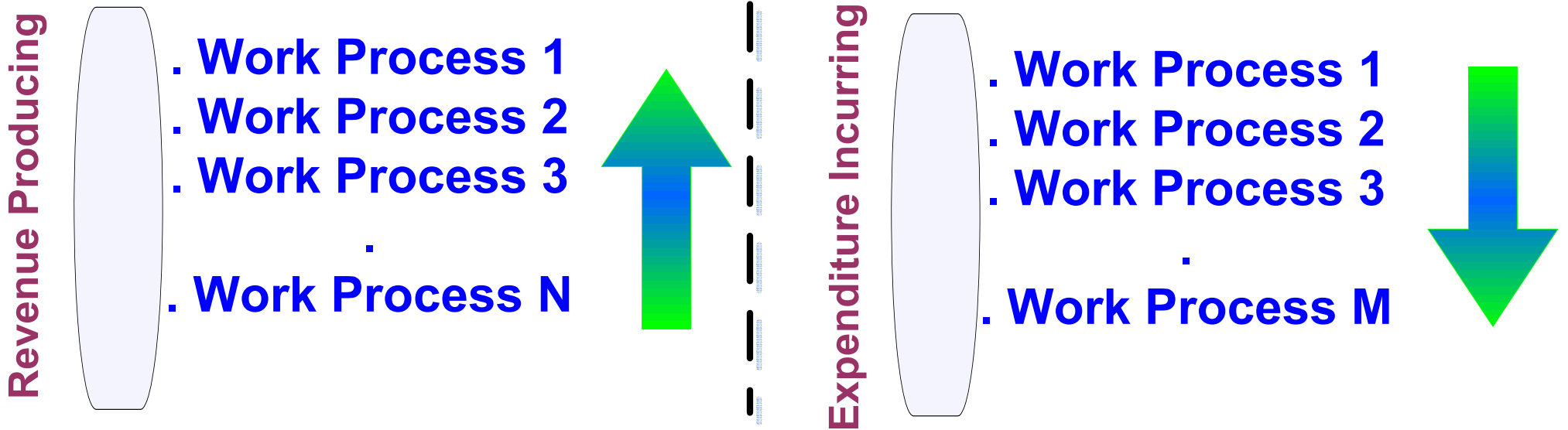
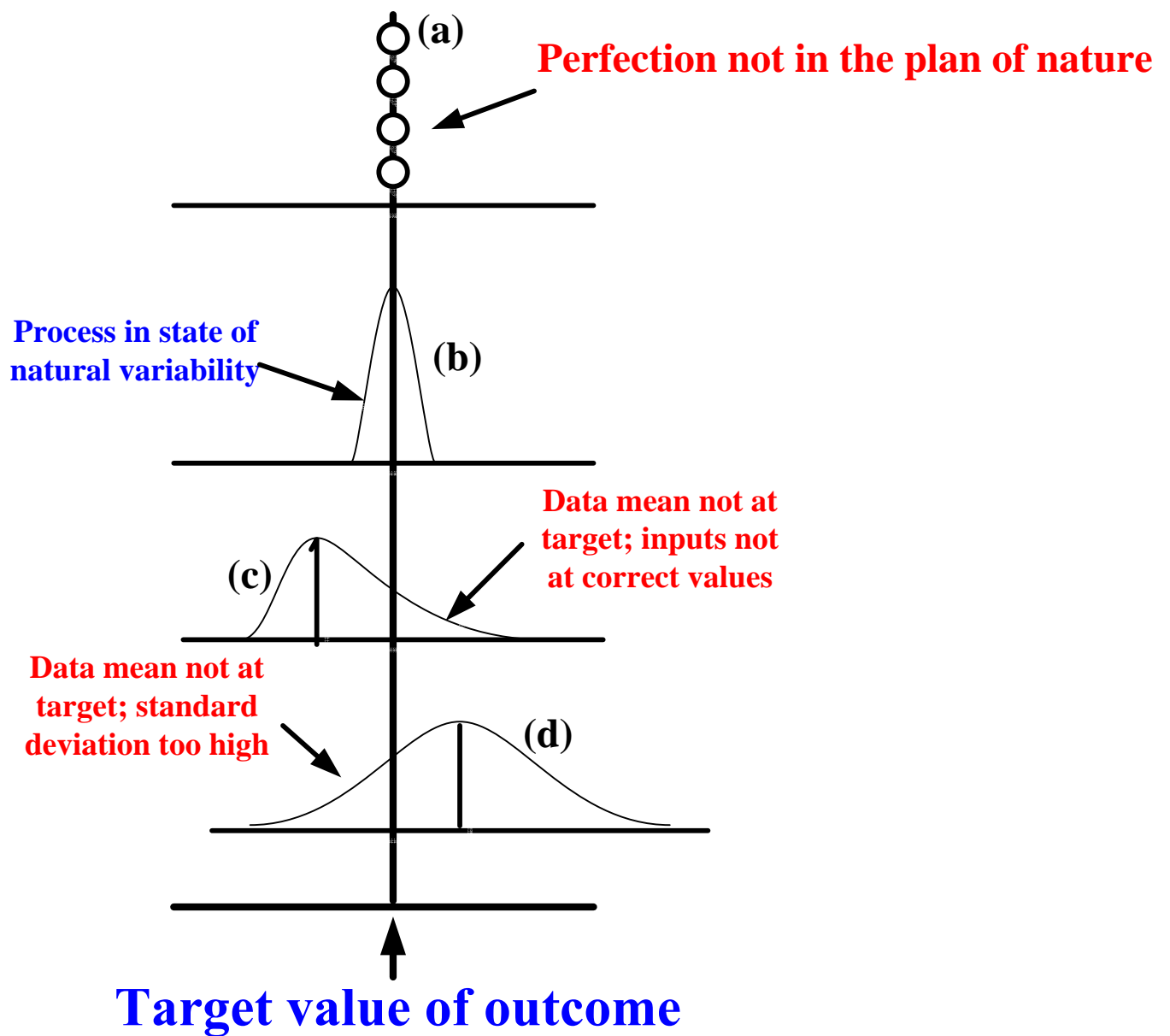


PATHWAY TO EXCELLENCE OF THE EXTERNAL: SIX SIGMA



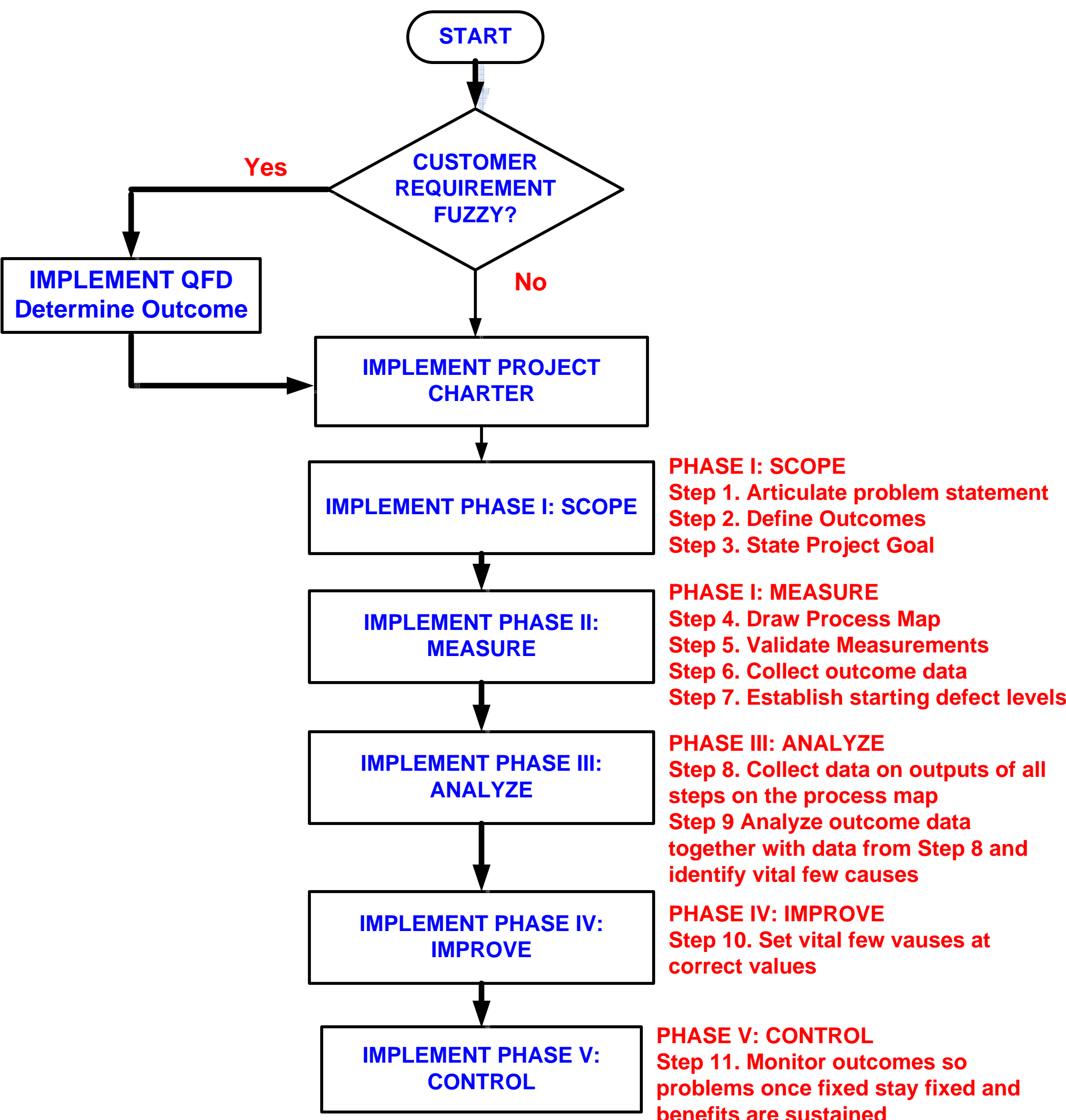
INCOME MAXIMIZED



- PROF. DESHPANDE'S NATURAL LAWS GOVERNING SIX SIGMA:**
1. The Law of Causes and Effects
 2. The Law of Natural Variability
 3. The Law of Assignable Causes
 4. The Law of Measurement Error

Embracing six sigma will allow individuals to do all that they do in the best possible manner and organizations to become globally competitive delighting customers, improving quality, reducing costs, and optimizing cycle times of their operations.

PATHWAY TO EXCELLENCE OF THE EXTERNAL: SIX SIGMA



References:

- Deshpande, P. B., “Six Sigma for Karma Capitalism”, Six Sigma and Advanced Controls, Inc., 2011.
- Arati Menon Carroll , “Six Sigma could change the world”, The Economic Times, Corporate Dossier, September 18, 2009.
- “Six Sigma Enlightenment”, Interview of Prof. Pradeep B. Deshpande with Dr. Ashok Desai”, Business Word, October 4, 2004.